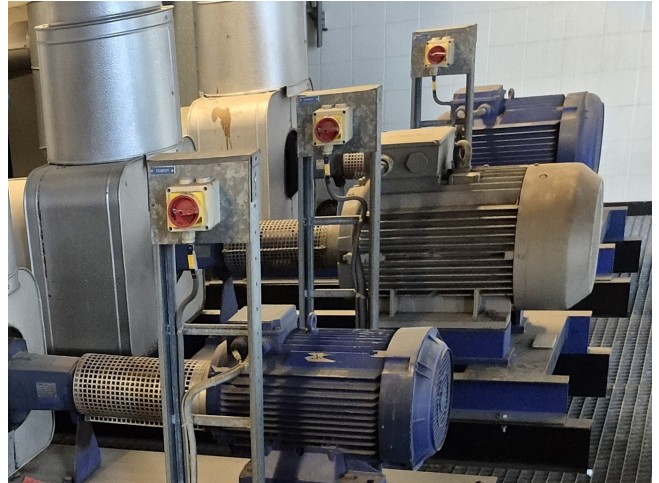


## KSB ETANORM 150-250 M7

### Specifications

Марка	KSB
тип	ETANORM 150-250 M7
Объемный расход Q макс. (м <sup>3</sup> /ч)	360,0
Высота доставки H макс. (м)	18,9
Мощность макс. (кВт)	30,0
Remarks	Y.o.b. 1994
Stock	1



### Description

#### Used KSB ETANORM 150-250 M7

Used KSB ETANORM 150-250 M7 water pump with Rotor XC200LK04 electric motor - 50 Hz - 30,0 kW - 1465 RPM. The pump has the following specifications: Qmax: 360,0 m<sup>3</sup>/h - Hmax: 18,9 m - Pmax: 30,0 kW. Dimensions: 1700x670x940 mm (LxWxH).

